



THE BRANDLAUREATE  
CSR BRANDLEADERSHIP  
AWARDS 2018



PERDANA UNIVERSITY

DU026(B)



# DOCTOR OF MEDICINE

JPT/BPP (R2/721/6/0004) (MQA/FA8289) 02/27

GRADUATE SCHOOL OF MEDICINE



## ABOUT PERDANA UNIVERSITY

Perdana University is envisioned to be an education-research hub for the region fulfilling the needs of the nation for competent health science graduates. It was established as a Public Private Partnership (PPP) initiative by Academic Medical Centre Sdn. Bhd., a subsidiary of Chase Perdana Sdn. Bhd. with the support of the Prime Minister's Department. The University is well equipped with leading edge teaching and learning facilities.

## DEAN'S MESSAGE

Welcome to the Perdana University Graduate School of Medicine (PUGScM). We are the ONLY medical school in Malaysia offering a four-year graduate entry medicine (GEM) program for aspiring doctors.

PUGScM admitted its first batch of students in September 2011. These students graduated at the Perdana University Inaugural Convocation on 25th September 2016. These Graduates have already embarked on their medical careers in various hospitals around the country and overseas (including the United States).

The PUGScM curriculum incorporates current clinical trends and evidence-based medicine with an emphasis on research and innovation. It is based on the US Medical curriculum with the United States Medical Licensing Examination (USMLE) as the Exit Examination. Successful graduates in addition to practising in Malaysia are eligible to pursue a US Medical Residency Program and Practice in the United States. This option leads to an earlier specialisation in one's chosen specialty. This is in tandem with our mission to provide an international educational model that supports intellectual discovery, nurtures creativity and embodies innovative knowledge.

Over the years, PUGScM has recruited some of the best academic faculty to provide outstanding education in an inclusive environment. The PUGScM experience is demanding, but it is also exceptionally rewarding and fulfilling. You will have an exciting journey as you discover your true potential and expand your horizon.

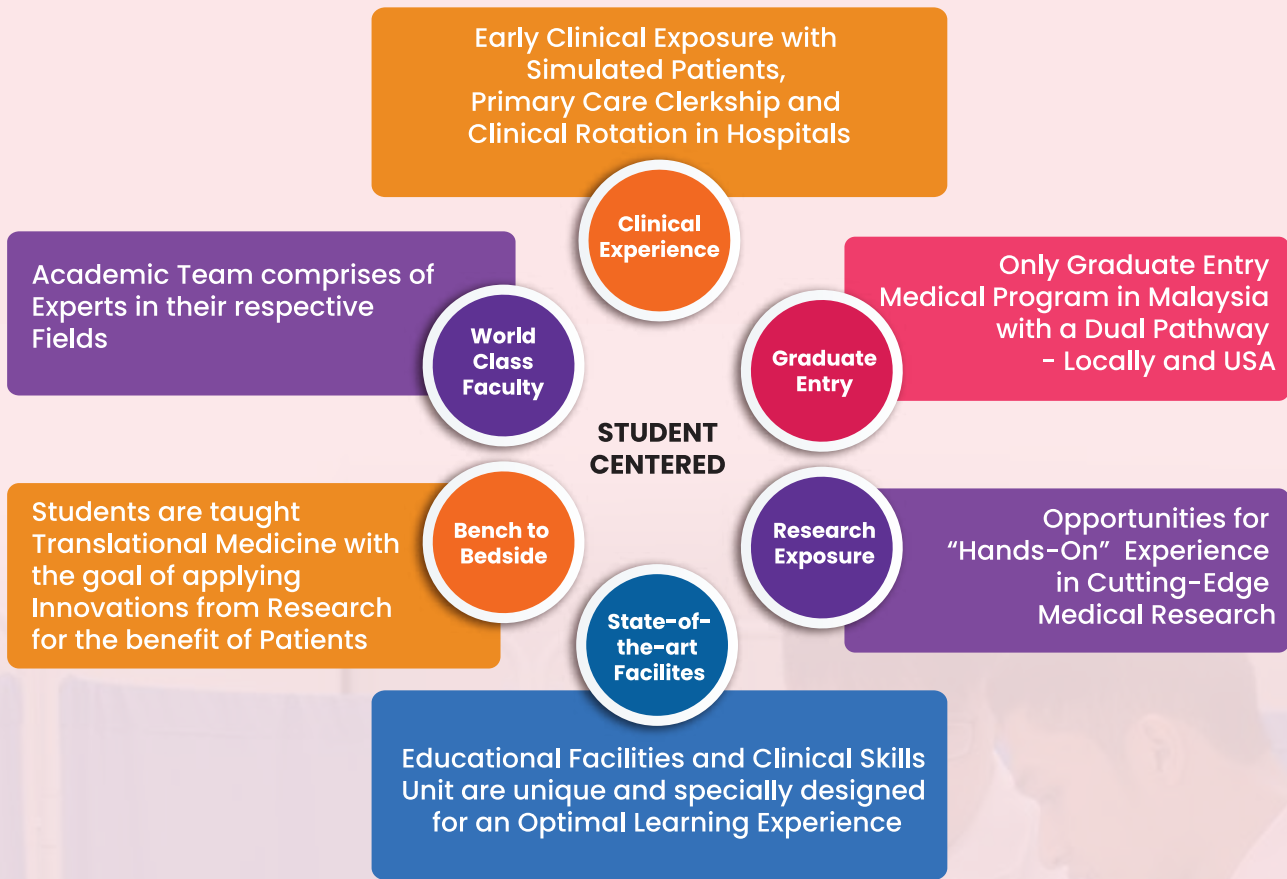
The faculty and I, look forward to having you at PUGScM. I am confident that your choice of PUGScM as the pathway to your medical career would be a wise one.

Please browse through our website for more information and thank you for your interest.

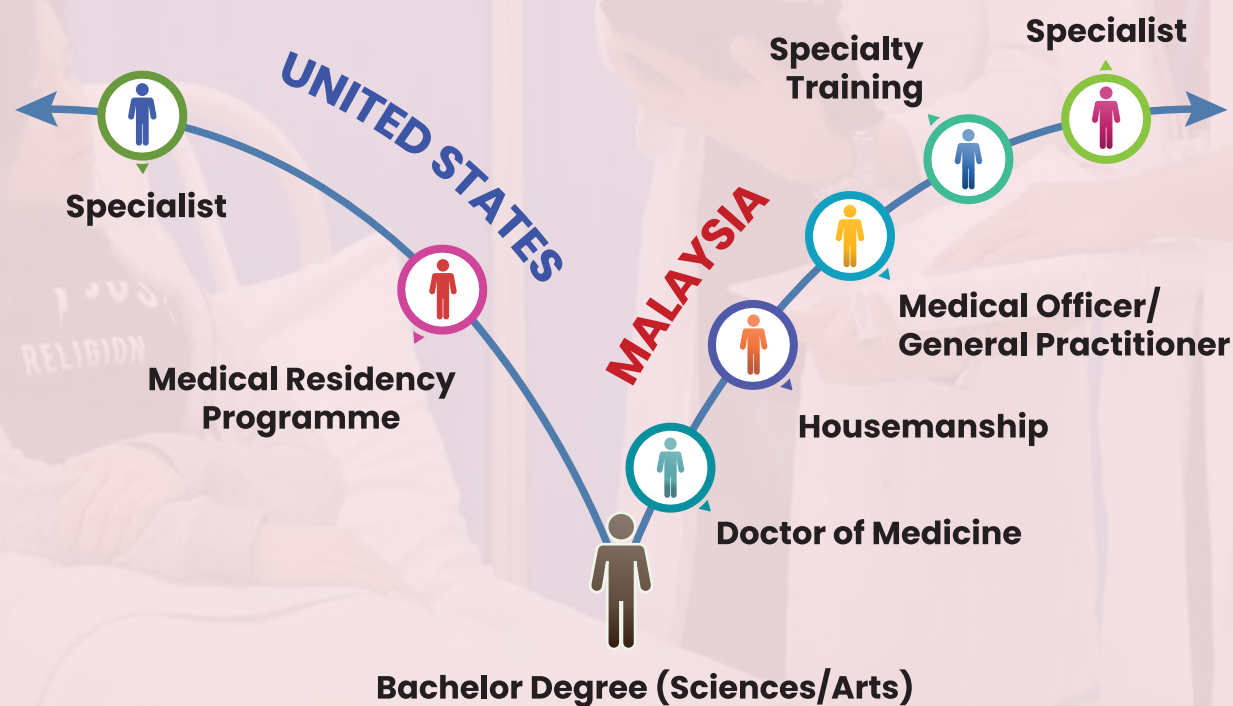


**PROFESSOR DATO' DR.  
HJ. MOHAMAD FAROUK  
ABDULLAH**

Clinical Professor in  
Obstetrics & Gynaecology  
MBBS (Malaya),  
FRCOG (London),  
CRM (Malaysia)



## PUGScM-DUAL CAREER PATHWAY





# ADMISSION REQUIREMENTS



## Bachelor's Degree

### Science:

Minimum CGPA of 3.30/4.00  
or equivalent

### Arts:

Minimum CGPA of 3.75/4.00  
or equivalent



## English Language Proficiency

MUET: Band 3  
or  
IELTS: 5.5  
or  
TOEFL: 550



## Short-Listed Candidates

Interview by faculty  
members



# AN INNOVATIVE CURRICULUM

We prepare our students to understand an individual patient's health in the context of the interactions between their biology and the environment. Concepts are concurrently reinforced with clinical experience, scientific concepts and critical thinking throughout the educational experience, building a confidence level in our graduates that gives them an outstanding foundation for internship and postgraduate training.

## YEAR 1

- Orientation and Training on Teamwork and Leadership
- Scientific Foundations in Medicine, Clinical Foundations in Medicine and Public Health/Ethics
- Scholarly Concentrations

## YEAR 2

- Primary Care Clerkship
- Transition to Wards (Skills Training in the Clinical Skills Unit, Case- Based Learning, Integrating Knowledge and Communication Skills)

## YEAR 3

- Core Clerkships in Internal Medicine, Pediatrics, Surgery, Obstetrics & Gynecology. Psychiatry/Neuroscience and Orthopedics

## YEAR 4

- Advanced Clerkships in Internal Medicine, Pediatrics, Surgery, Obstetrics & Gynecology.
- Special Postings (ENT, Ophthalmology, Anesthesia/Critical Care and Others)
- Elective Rotations
- Transition to Internship

**Intersessions:** Throughout the 4 years, Intersessions are held periodically. These are self-contained modules emphasizing a holistic approach to Medicine (e.g. Global Health, Art in Medicine, Disaster Medicine, Palliative Medicine)

## FIND US HERE

Perdana University, Suite 9.2, 9th Floor, Wisma Chase Perdana,  
Changkat Semantan, Damansara Heights, 50490 Kuala Lumpur, Malaysia.

Tel: +603 8941 8646 Fax: +603 8941 7661



[www.perdanauniversity.edu.my](http://www.perdanauniversity.edu.my)



[enquiry@perdanauniversity.edu.my](mailto:enquiry@perdanauniversity.edu.my)



[perdana\\_university](https://www.instagram.com/perdana_university)



[PerdanaUniversity](https://www.facebook.com/PerdanaUniversity)



[perdana\\_univ](https://twitter.com/perdana_univ)

SCAN ME

FOR PROGRAMME AND SCHOLARSHIP  
APPLICATION FORM

